

MEDLOG

LAN – IntelliVue Installation Guide

Hamburg, Mai 2007

© Copyright - BMC Gesellschaft für Medizintechnik mbH,
BMC IT Health Solutions
Pavillon 41a (UKE Ost 56)
Martinistrasse 52,
D-20251 Hamburg

Phone: 0049-40- 4260511-0
Fax: 0049-40- 4260511-99
eMail: info@bmc-ithealth.de

All rights reserved

PHILIPS INTELLIVUE OVER LAN **An Installation Guide**

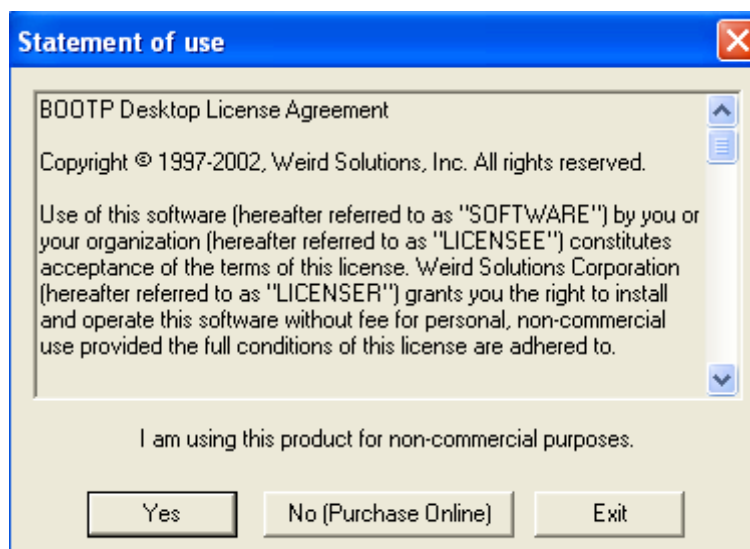
The following description aims at the configuration of Philips Intellivue over Local Area Network and accessing and there by working with the Medlog server.

SET UP:

To give an IP address to the Intellivue, 'BOOTP Desktop Server 1.5' software should be used. The software can be downloaded for Win XP, for example, from the following link.

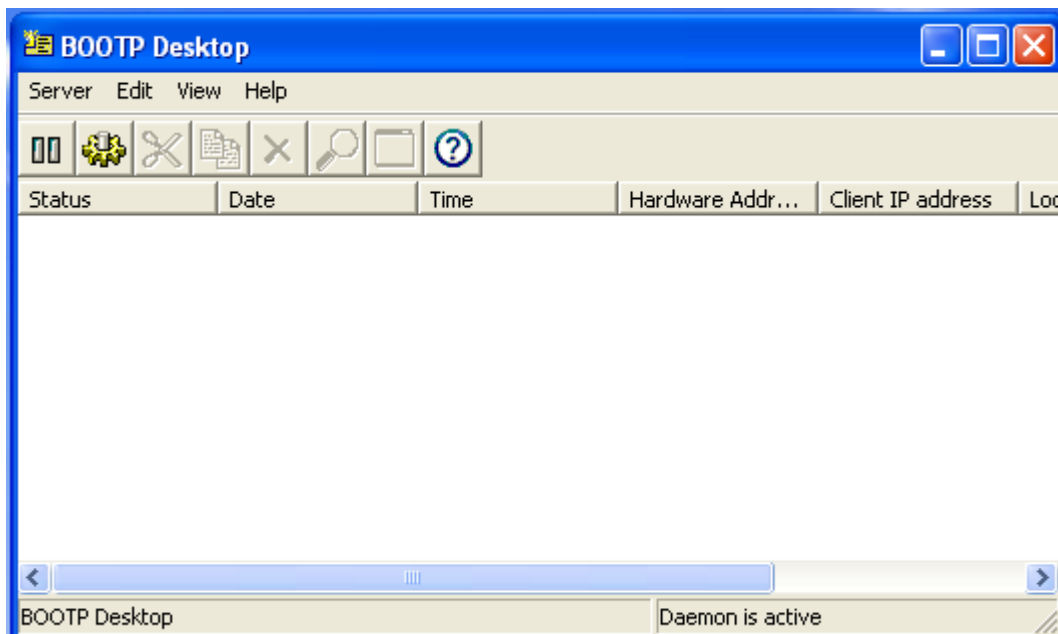
<http://www.networkingfiles.com/Network/bootp.htm>

After the installation, start BOOTP Desktop from START or the Desktop where ever the icon is. A dialogue box appears as shown in the picture below.

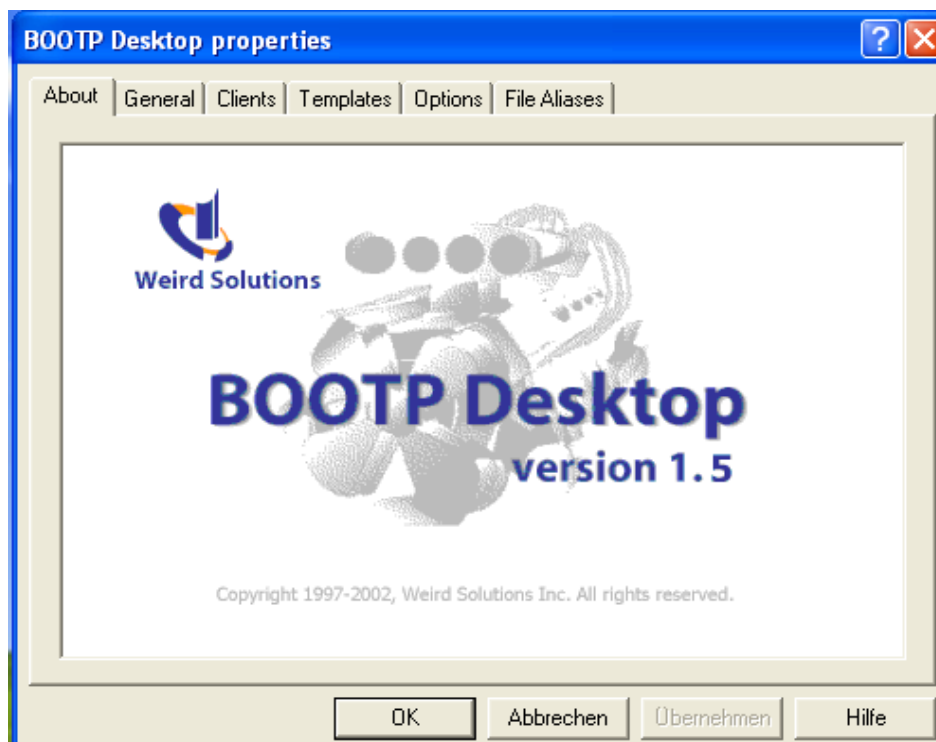


Here click 'Yes' as this documentation assumes the usage of the software as a trial version.

The following is what you get in the next step.

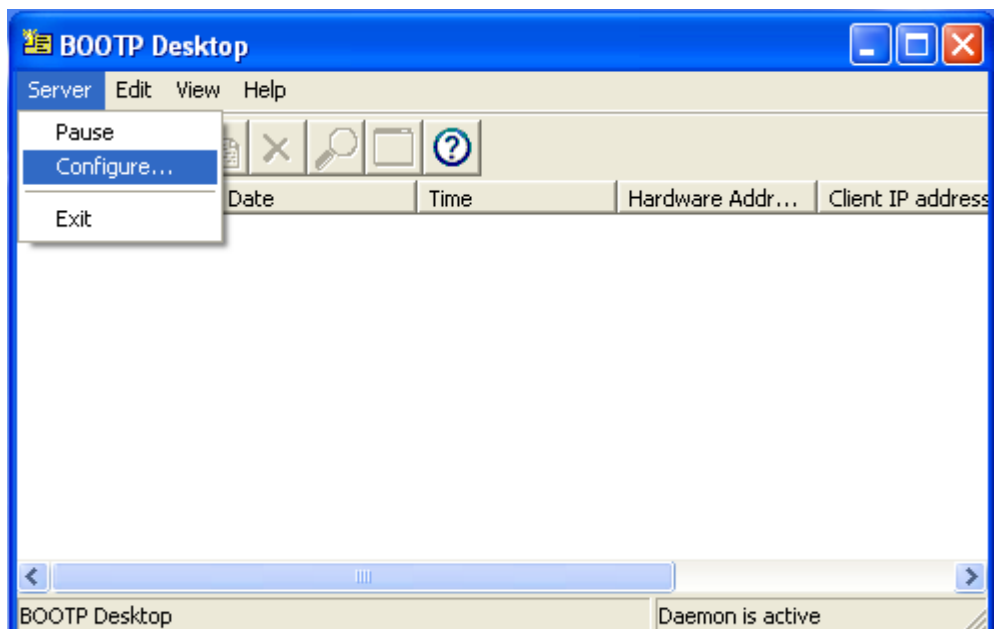


Now connect Philips Intellivue monitor to the Computers Network Card specifically with a 'Cross Over Cable'. Please make sure the connection at the Intellivue side is correct as there are other sockets which are compatible to plug-in but cannot be used. Connect the Cross Over Cable to the socket where 'LAN' is indicated in writing as shown in the figure below.





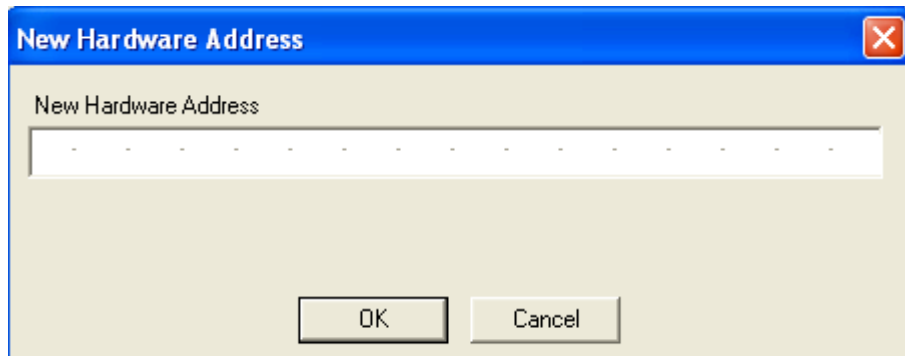
Now working with BOOTP, click 'Server' and then click 'Configure'.



Here select 'Clients' tab.

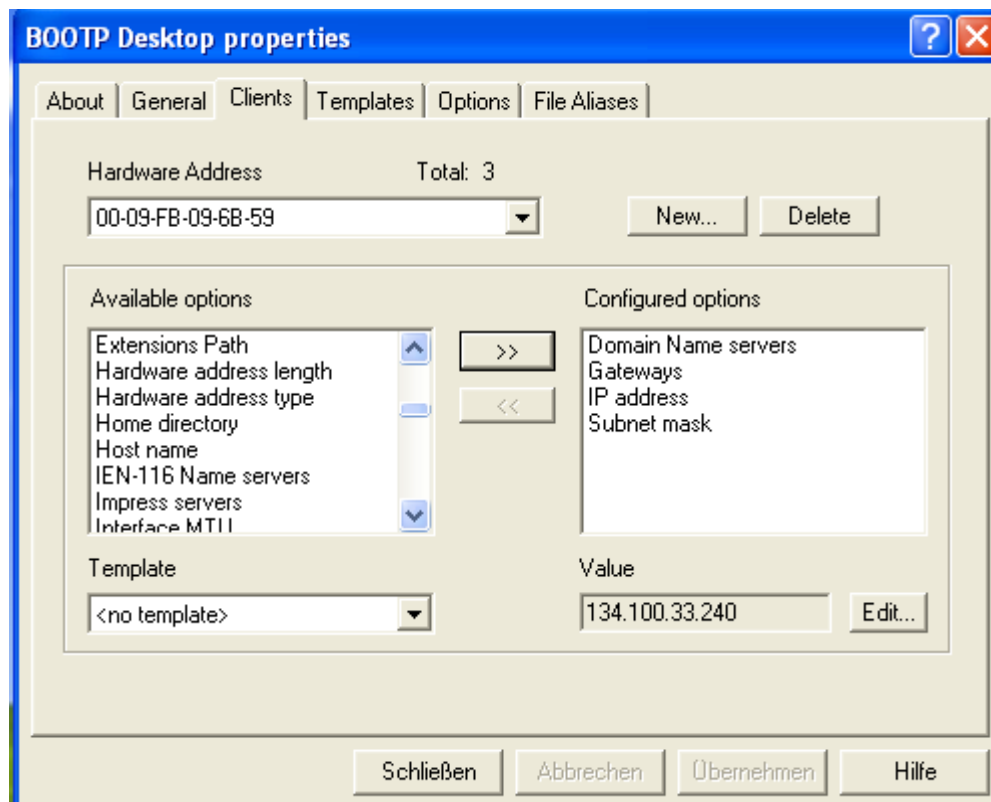
Please click 'New', then a dialogue box appears where you have to enter the 'Hardware Address' of the Philips monitor.

Note: To find the Hardware address of the monitor, click 'Main Setup', scroll down to '**Bed Information**' and there the Hardware address is available.



Here please give the Hardware Address and click OK.

The Hardware Address is shown in the window as shown in the figure below.

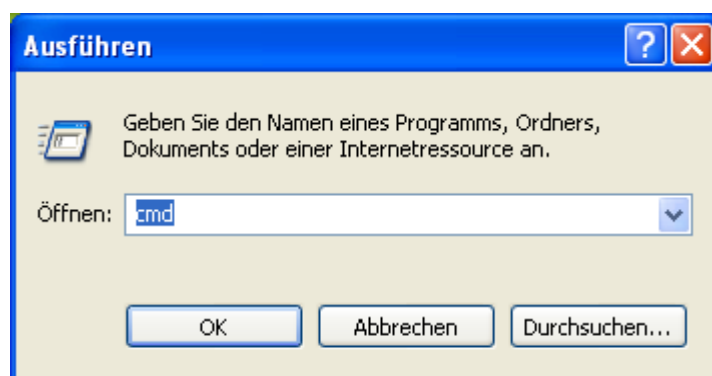


Now hold the 'Strg' key and select '**Domain Name servers**', '**Gateways**', '**IP address**' and '**Subnet mask**' and click '>>' to send these items to the 'Configured options'.

Now you have to give values for all of these parameters. For this, select each parameter, for example, 'Domain Name servers' and click 'Edit'. Give the value in the dialogue box appeared and click OK. You can find the values for these parameters in the network settings for your computer.

Repeat this procedure to give values for all the parameters.

Note: To know what the parameter values are, please go to START and click RUN.



In RUN please typein 'cmd' and click OK. Then command prompt window will be opened.

```

C:\WINDOWS\system32\cmd.exe
Microsoft Windows XP [Version 5.1.2600]
(C) Copyright 1985-2001 Microsoft Corp.

C:\Dokumente und Einstellungen\bahadur.BMC2>ipconfig /all_

```

In command prompt window please type in 'ipconfig /all' and press ENTER or RETURN. Then the values which were configured on your computer will be seen.

```

C:\WINDOWS\system32\cmd.exe
(C) Copyright 1985-2001 Microsoft Corp.

C:\Dokumente und Einstellungen\bahadur.BMC2>ipconfig /all

Windows-IP-Konfiguration

    Hostname. . . . . : BMC2
    Primäres DNS-Suffix . . . . . :
    Knotentyp . . . . . : Unbekannt
    IP-Routing aktiviert. . . . . : Nein
    WINS-Proxy aktiviert. . . . . : Nein

Ethernetadapter LAN-Verbindung:

    Verbindungsspezifisches DNS-Suffix:
    Beschreibung. . . . . : Realtek RTL8139-Familie-PCI-Fast Ethernet-NIC
    Physikalische Adresse . . . . . : 00-13-8F-F1-0B-58
    DHCP aktiviert. . . . . : Nein
    IP-Adresse. . . . . : 172.17.41.102
    Subnetzmaske. . . . . : 255.255.255.0
    Standardgateway . . . . . : 172.17.41.254
    DNS-Server. . . . . : 134.100.33.240

C:\Dokumente und Einstellungen\bahadur.BMC2>

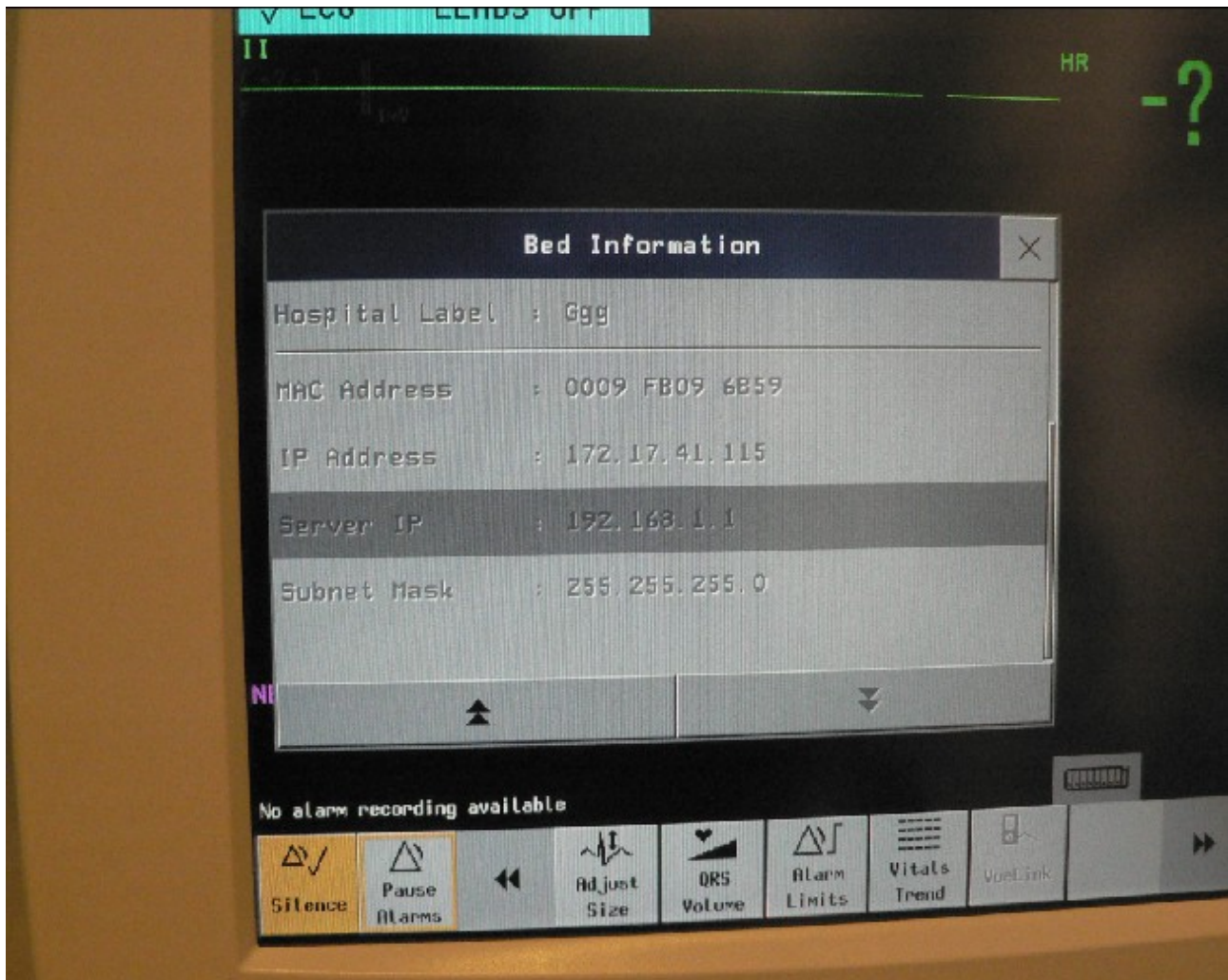
```

Here, the IP-Address, Subnetmask, Standardgateway and DNS-Server (Domain Name Server) were configured for your computer. But for the IP-Address, all the remaining parameters which have to be configured in BOOTP, values would be the same as seen in the command prompt. The IP-Address value which has to be given in BOOTP configuration should be somewhere near to the IP-Address of the computer (seen in command prompt).

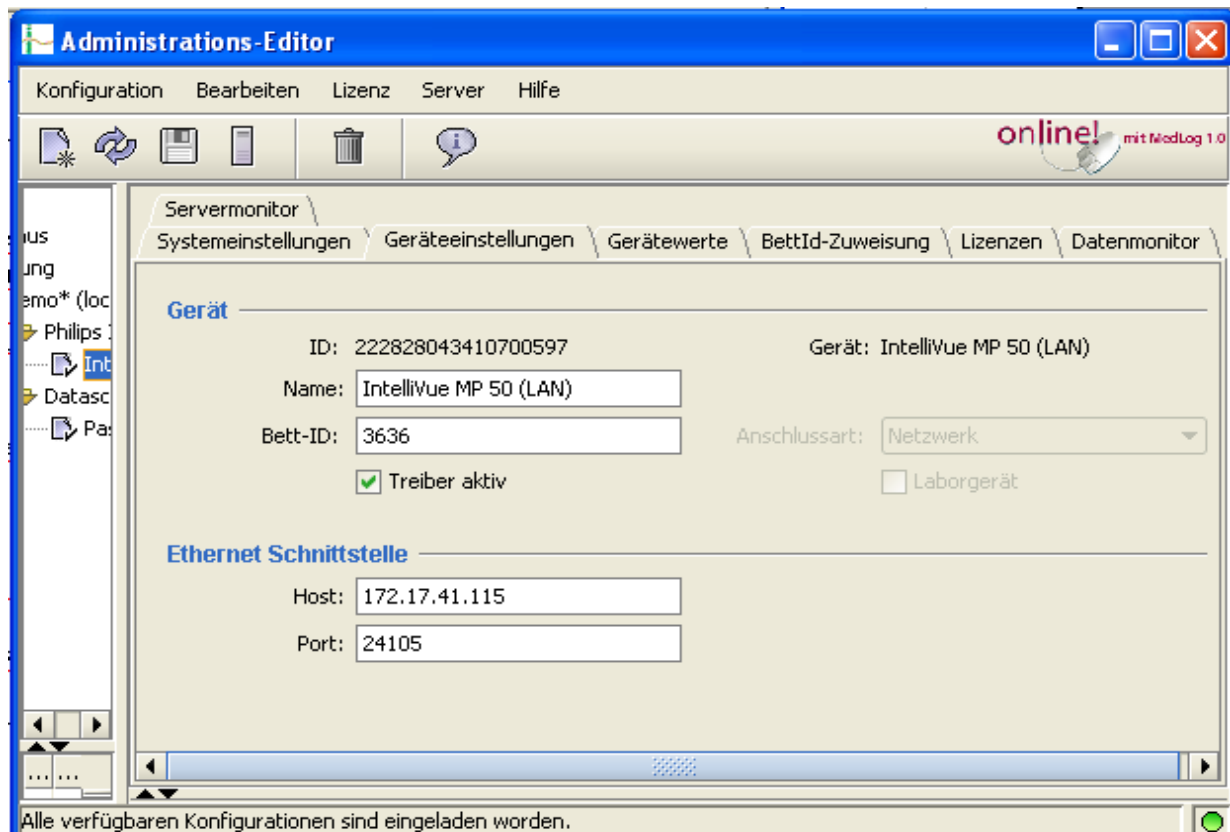
But please make sure that the give IP-Address is not in use on another device or computer.

Now that all the parameters have been configured, click 'Close'. Sometimes restart of BOOTP Desktop is required if your are asked to do so.

Now the given IP address is assigned to the Intellivue monitor in few seconds and communication is set between the computer and the monitor. This can be seen on the monitor in 'Bed Information' as shown in the figure below.



Now, start Medlog Server and Medlog Editor. Connect to the Philips Intellivue monitor.



Here please give the IP address of the Intellivue Monitor for 'Host' and upload it to the server. Everything should work fine as normal.

Now, the monitor can be connected anywhere in the LAN and can be accessed from any computer in the LAN. Please remember, only one computer at a time.

This guide is prepared with effort and care while working on the setup procedure simultaneously. Please feel free to bring to notice about any errors for which the act would be highly thankful.

Warning: Plug and play is not possible if BOOTP Desktop is closed. BOOTP Desktop is recommended not to be closed during MedLog and Intellivue is running on LAN.